



# 64' x 96' REDI-PLEX BUILDINGS

## Dimensions

- 64' Long (including hitch)
- 96' Wide

## Exterior Finish

- Vertical textured sliding perimeter frame
- Clear span EPDM roof mansard

## Interior Finish

- Vinyl covered walls
- Solid core wood doors
- Carpet or tile floor
- Suspended acoustical ceiling
- Wide open shells available
- Optional door locations

## Electric

- Recessed diffused fluorescent lights
- Pre-wired sub panels

## Heating/Cooling

- Central AC w/ electric, heat ducted supply & return

## Windows/Doors

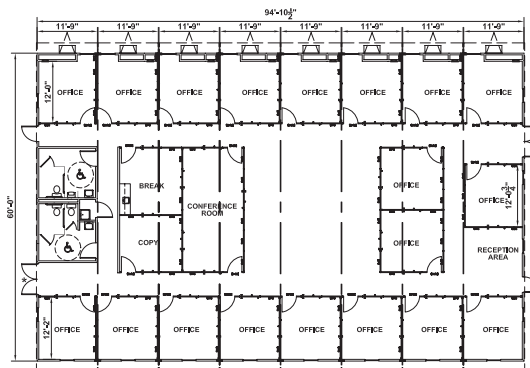
- Vertical slide insulated windows w/ blinds
- Insulated stl door in stl frame w/ vision panel



When you have access to comfortable, convenient office space, your business operations flow more seamlessly. Our 64' x 96' Redi-Plex building can help keep your operations on track and moving forward. Durable, secure and easily configured, our Redi-Plex buildings can be used as healthcare facilities, administrative offices, meeting areas or classroom space. Our 64' x 96' Redi-Plex building features:

- 60' Clear span roof truss
- Suspended acoustical ceiling
- Recessed fluorescent lighting
- Energy efficient windows
- Central HVAC

## PRODUCT FLOOR PLAN



\* Photos are representational; actual products vary. Additional floor plans and specifications may vary from those shown and are subject to in-stock availability