

LOYOLA MARYMOUNT UNIVERSITY

Los Angeles, California

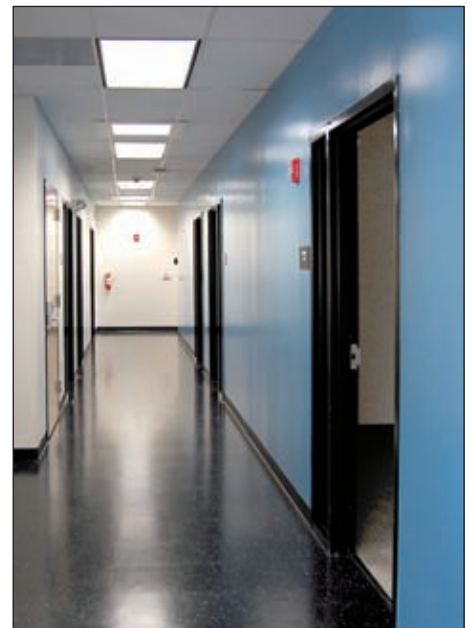


Client Project

To free up space required for a new library on the campus of Loyola Marymount University (LMU) in Los Angeles, administration officials had to demolish and relocate a permanent building that housed classrooms and offices. The Foley Annex temporary classrooms and offices were built after the permanent structure was demolished.

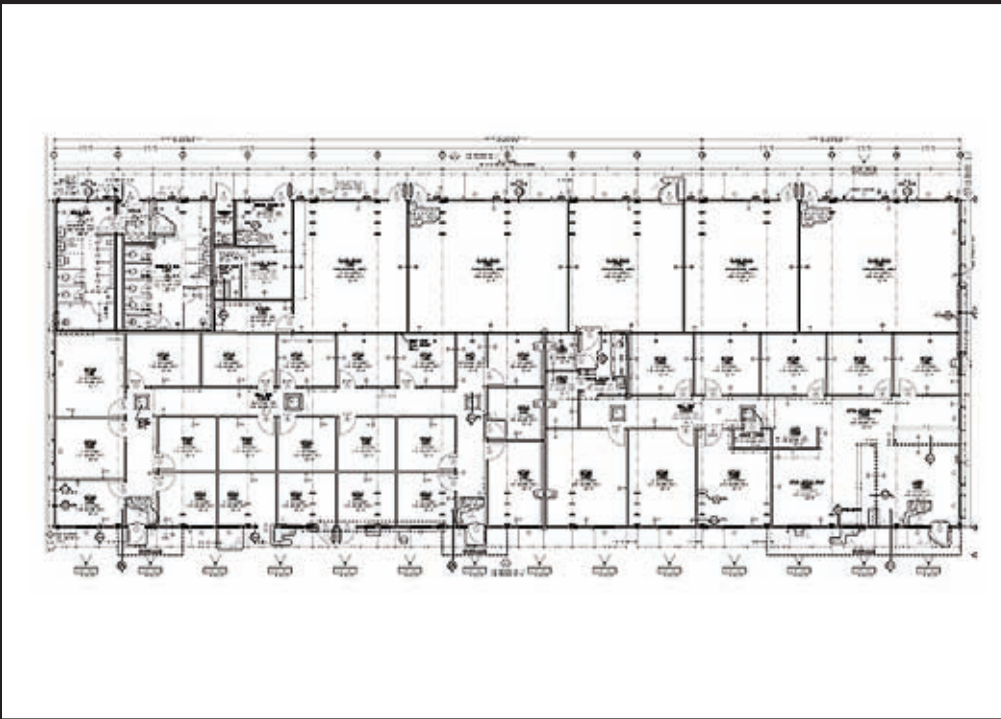
Client Need

LMU required that the classrooms and offices be constructed within four months with minimum disruption so that office staff and students would not be displaced and classes could start on time. The new facility had to accommodate up to 40 students per classroom, with 10 classes held every day. The university also required that the new building blend with the aesthetics of existing permanent structures on campus.



LOYOLA MARYMOUNT UNIVERSITY

Los Angeles, California



The Williams Scotsman Solution

Because LMU had worked with Williams Scotsman previously, the administration was familiar with Williams Scotsman's reputation for outstanding customer service. Williams Scotsman successfully coordinated several parties involved with the project, including the general contractor (Rello's Construction), the factory (Walden Structures), LMU staff, the architect (David Jay Flood), various inspectors and the Fire Marshall. Williams Scotsman assured the team maintained compliance with city ordinances and helped obtain necessary inspections and permit approvals to keep the project moving forward.

The Result

Williams Scotsman delivered a 10,000-square-foot facility in 14 12' x 60' modules located on LMU's main campus. The modular structure was fitted to the GC's permanent foundation with concrete footings. The Foley Annex houses five classrooms and 29 offices, including Environmental Health and Safety and faculty offices for the College of Communication and Fine Arts and the Frank R. Seaver College of Science and Engineering. Complete with restrooms, kitchen and telecommunications room, the Annex also accommodates the Sinatra Opera Workshop, the PRESS program, the REU/RET program, the Academic Community of Excellence (ACE) program and Emergency Medical Technicians. The exterior colors and entryways identify each of the three building use areas. Since the project was completed within the required timeframe, classes began on schedule.

WILLIAMS
SCOTSMAN

ORDER RECEIVED

0/00/00

DELIVERY

0/00/00

INSTALLATION

0/00/00

SPACE BY

WILLIAMS

SCOTSMAN

800.782.1500

www.willscot.com