

WOODROW WILSON BRIDGE PROJECT

Maryland – Virginia



Client Project

Parsons Brinkerhoff Construction Services, in a joint venture with Potomac Crossing Consultants, was contracted to design and build a new **Woodrow Wilson Bridge** connecting Maryland and Virginia. The six-lane 5,900-foot drawbridge designed in the 40's and built in the 50's was unable to handle the current traffic volume of 200,000 cars per day. Potomac Crossing Consultants' goal was to anticipate traffic needs over the next 100 years and incorporate those needs into the new design. The production schedule for the bridge is estimated to take place over 10 years with the completion projected for 2012. The bridge project design includes two new drawbridges each 6,075 feet long, totaling 12 lanes. The bridges will be twenty feet higher than their predecessor, decreasing the annual number of drawbridge openings by 70%. The bridges will also include two lanes which can accommodate future HOV/transit travel. A pedestrian walkway will connect the parks and trails of Maryland with those of Virginia.

Client Need

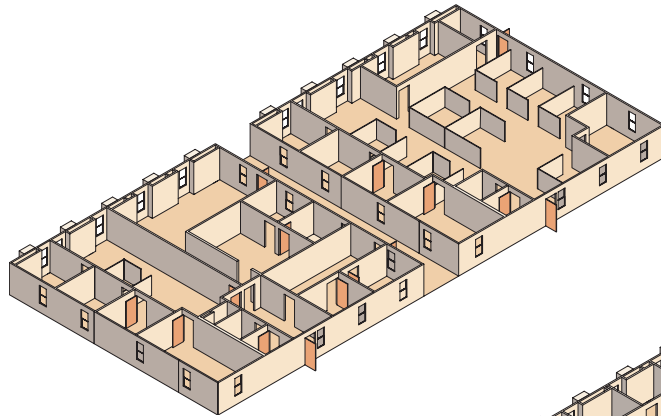
Due to the duration and complexity of the project, Parsons Brinkerhoff needed space to accommodate the workers throughout the planning and construction phases. They needed to house the engineers, architects, and construction and road crews unique to each phase of the elaborate project. The client needed a company to be part of the team, working with multiple approval committees to reach a consensus on the necessary space solutions. As the bridge construction progressed, it would be necessary to be able to reconfigure the interior of the buildings. Parsons Brinkerhoff had worked with **Williams Scotsman** in the past and was confident in their ability to offer design-build construction.



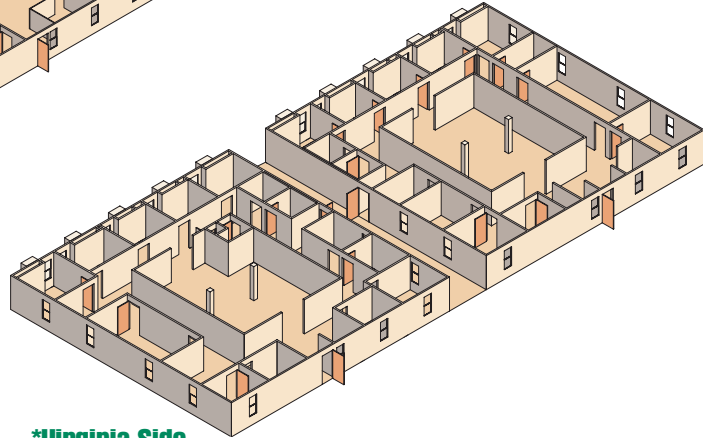
PROJECT CASE HISTORY

WOODROW WILSON BRIDGE PROJECT

Maryland – Virginia



*Maryland Side



*Virginia Side

The Williams Scotsman Solution

Williams Scotsman designed a solution to suit all of Parson Brinkerhoff's space needs. Two, five section Redi-Plex Buildings™ were installed with turn-key construction on each side of the bridge. Redi-Plex, the ideal space solution, is fast, affordable and offers total interior flexibility. Each building complex accommodates up to seventy engineers, architects and inspectors. **Williams Scotsman** also provided several storage containers and standard field offices for the subcontractors. **Williams Scotsman** delivered the buildings without the use of a crane saving time and money. The 60' steel clear span roof trusses on each building offered optimal flexibility for space planning by eliminating the need for support columns. The interior consisted of private offices, conference rooms, large meeting rooms, kitchens and handicap accessible restrooms. Gypsum walls, which are virtually maintenance free and act as sound barriers, are used throughout the buildings. The HVAC units are equipped with a special system to properly regulate the computer server room temperature. **Williams Scotsman** installed a drop acoustical ceiling, which provided greater sound absorption and easy access for electrical and telephone wiring. Power poles further increased the flexibility of the interior layout. **Williams Scotsman** did all of the necessary custom build-outs to match the interior layout to the needs of the occupants. Custom built decking and canopies adjoin the buildings creating an outdoor meeting space. The roofs are constructed of .045 EPDM, a rubber composite, which decreases exterior noise. Duratemp Plywood Siding™, consisting of panels with a tempered hardboard face, enhances the appearance and durability of the buildings.

The Result

Williams Scotsman continues to meet the needs of Parson Brinkerhoff by providing additional buildings to its construction sites in Maryland and Virginia. Building complexes have been added and building interiors have been reconfigured to continue to support the evolving bridge project. The buildings now accommodate over one hundred forty people on each side and continues to grow.

“Williams Scotsman listened carefully to our needs. Often, we didn't know what we wanted or what our needs were. Williams Scotsman helped us define them.”

– Giles Njumba
Project Office Engineer

SPACE BY



800. 782. 1500
www.willscot.com