

ANNE ARUNDEL COMMUNITY COLLEGE

Arnold, Maryland



Client Project

With their busy metropolitan campus expanding, Anne Arundel Community College needed more space for administrative offices. The building would need to be located in a parking lot due to storm water concerns, but the college knew it would have to be relocated some time in the future. Even so, it had to look and feel like a permanent structure and blend in with the campus architecture.

Client Need

Anne Arundel Community College wanted their administrative space to match the existing campus, but they had critical constraints on the project. Because the building would need to be relocatable, a modular unit made the most sense. Heavy campus volume during the weekdays mandated a weekend building delivery and installation date. And the installation, interior and exterior finishing work would need to be completed within 90 days from the contract award as dictated by the building permit.



"The quick design time and coordination of the final customer approval plan was impressive.

We'll use Williams Scotsman again!" – Jim Taylor, Director of Campus

Development and Capitol Projects

SPACE BY

WILLIAMS

SCOTSMAN

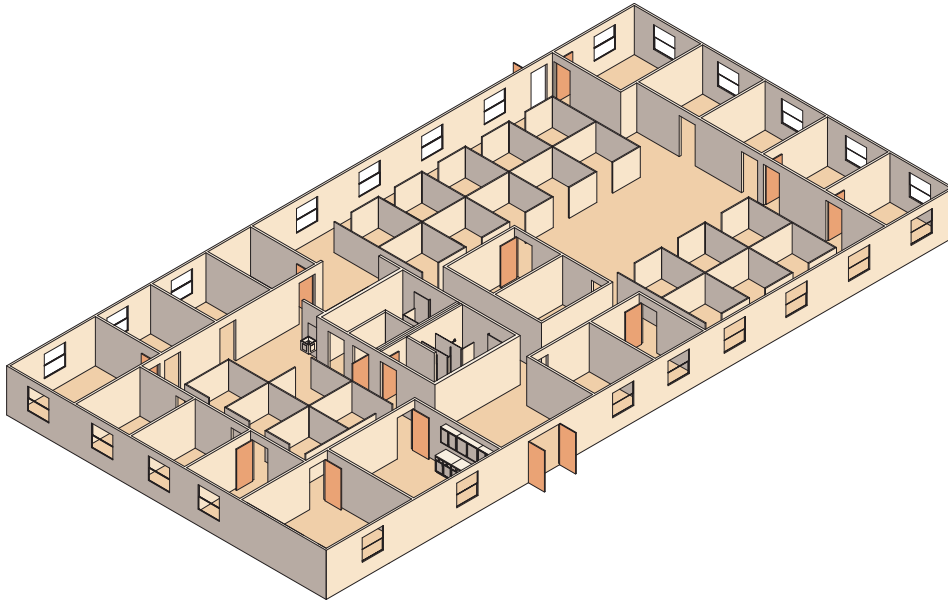
800.782.1500

www.willscot.com

PROJECT CASE HISTORY

ANNE ARUNDEL COMMUNITY COLLEGE

Arnold, Maryland



The Williams Scotsman Solution

Williams Scotsman won the bid, and got to work as soon as a layout was approved, providing eight design revisions over the course of just two weeks through their local office. Ten clear span modular units were used to create a 60' interior clear span structure, allowing for complete design flexibility. The space was configured to include two large training rooms with a foldout partition system, perimeter offices, restrooms and a small galley kitchen. The buildings were brought in on a Saturday evening and set on Sunday, avoiding any disruption to the campus traffic.

To make the space more inviting, the interior sheetrock was painted and finished on site. Custom carpeting and aluminum window blinds were installed in the offices, while a custom entry canopy and Dryvit Outsulation (EIFS) exterior finish created a unified appearance with existing campus buildings. In addition, three roof-mounted HVAC units were installed on site.

The Result

Jim Taylor, Director of Campus Development and Capitol Projects, is more than pleased with the new space. "The delivery and installation went well, as expected from Williams Scotsman," he says. "The quick design time and coordination of the final customer approval plan was impressive. We'll use Williams Scotsman again!"

WILLIAMS
SCOTSMAN

PERMITS

1-21-03

DELIVERY

2-10-03 ??

INSTALLATION

4-30-03

OCCUPANCY

4-30-03 ??

SPACE BY

WILLIAMS

SCOTSMAN

800.782.1500

www.willscot.com